

# Trellis jumper by Martin Storey

Originally featured in Yarn Forward #7

These revisions by YF's new technical editor were issued 26 January 2009 and supercede all previous revisions.

## MEASUREMENTS

Finished chest 46.5 (55, 63.5)in, 118 (139.5, 161.5)cm

Length 25.5 (27.5, 29)in, 64.5 (70, 73.5)cm

## MATERIALS

### Yarn

Rowan Pure Wool DK (100% superwash wool; 136yd, 124m per 50g ball), 22 (27, 32) balls colour #10 Indigo

### Yardage/Metreage needed

2992 (3672, 4351)yds, 2728 (3348, 3968)m

### Needles

4mm (US 6) needles

3.75mm (US 5) needles

### Notions

Cable needle (cn)

Tapestry needle

Stitch holder

## TENSION/GAUGE

34 sts and 30 rows to 4x4in, 10x10cm in body cable pattern with larger needles

## SPECIAL ABBREVIATIONS

C6F: slip next 3 sts to cn and hold to front, k3, k3 from cn

CP6F: slip next 3 sts to cn and hold to front, p3, k3 from cn

C6B: slip next 3 sts to cn and hold to back, k3, k3 from cn

## PATTERN

### Back

Using smaller needles, cast on 198 (234, 270) sts.

Work Edge Cable:

Row 1 (RS): p3, k12, \*p2, k2, p2, k12, repeat from \* to last 3 sts, p3.

Row 2 (WS): k3, p12, \*k2, p2, k2, p12, repeat from \* to last 3 sts, k3.

Row 3: p3, C6B, C6F, \*p2, k2, p2, C6B, C6F, repeat from \* to last 3 sts, p3.

Row 4: As Row 2.

Row 5: As Row 1.

Row 6: As Row 2.

Work in pattern for 22 more rows, ending on Row 4 of Edge Cable.

Change to larger needles and work Body Cable:

Row 1 (RS): p3, k6, C6B \* p6, k6, C6B, repeat from \* to last 3 sts, p3.

Row 2: k3, p12, \*k6, p12, repeat from \* to last 3 sts, k3.

Row 3: p3, k3, C6B, k3, \*p6, k3, C6B, k3, repeat from \* to last 3 sts, p3.

Row 4: k3, p12, \*k6, p12, repeat from \* to last 3 sts, k3.

Row 5: p3, C6B, k6, \*p6, C6B, k6, repeat from \* to last 3 sts, p3.

Row 6: k3, p12 \*k6, p12, repeat from \* to last 3 sts, k3.

Row 7: p3, k12, \*p3, C6F, k9, repeat from \* to last 3 sts, p3.

Row 8: \*k3, p15, repeat from \* to last 18 sts, k3, p12, k3.

Row 9: p3, \*k12, CP6F, repeat from \* to last 15 sts, k12, p3.

Row 10: k3, p12, \*k3, p15, repeat from \* to last 3 sts, k3.

Row 11: p3, k12, \*p3, Cp6F, k9, repeat from \* to last 3 sts, p3.

Row 12: k3, \*p12, k6, repeat from \* to last 15 sts, p12, k3.

Work in cable pattern until piece measures 17 (18, 18.5)in, 43 (46, 47)cm from cast-on edge, ending with RS facing for next row.

Shape armholes

Cast off 10 sts at beg of next two rows. 178 (214, 250) sts.

Dec 1 st at each end of next 6 rows, then every other row 6x, then every 4th row 3x. 148 (184, 220) sts.

Continue in pattern until piece measures 25.5 (27.5, 29)in, 64.5 (70, 73.5)cm from beg, ending with RS facing for next row.

Shape neck and shoulders

Cast off 14 (18, 24) sts at beg of next 2 rows. 120 (148, 172) sts.

Next row (RS): Cast off 14 (18, 24) sts, work in pattern until there are 18 (22, 22) sts on right-hand needle. Turn, work on these sts only.

Next row (WS): Cast off 4 sts, patt to end. 14 (18, 18) sts.

Next row (RS): Cast off rem sts.

With RS facing, join yarn to rem sts and cast off center 56 (68, 80) sts for neck.

Work second side as above, reversing shaping.

Front

Work as for back to armholes, ending with WS facing for next row.

Begin neck opening and shape armholes

Next row (WS): Work 93 (111, 129) sts in pattern, (p2tog, p1) 4 times, work in pattern to end. 194 (230, 266) sts.

Next row (RS): Cast off 10 sts, work in pattern until there are 83 (101, 119) sts on right-hand needle, turn work and continue on these sts only. Place rem 101 (119, 137) sts on holder.

Continue in patt, working armhole decs as for Back, until piece measures 5.5 (6.5, 7)in, 14 (16.5, 18)cm from bottom of neck opening, ending with WS facing for next row.

Shape neck

Next row (WS): Cast off 16 (20, 24) sts, patt to end.

Dec 1 st at neck edge on every row 4 (6, 8) times, then on every other row until 42 (54, 66) sts rem.

Continue in patt until piece measures same as back to shoulder. Shape shoulder as for back.

Return held sts to needle and join yarn with RS facing. Cast off 8 sts, work pattern to end. 93 (111, 129) sts. Cast off 10 sts at beg of next row. 83 (101, 119) sts. Work armhole, neck, and shoulder as for left side, reversing shaping.

### Sleeves

Using smaller needles, cast on 90 (108, 108) sts.

Work 28 rows in Edge Cable as for Back.

Change to larger needles and begin Body Cable pattern. Inc 1 st each end every 4 rows 0 (0, 15) times, then every 6 rows 7 (7, 10) times, then every 8 rows 10 (10, 0) times, working all increased sts in rev stockinette. 124 (142, 158) sts.

Continue in patt until sleeve measures 19 (20, 20.5)in, 48 (51, 52)cm from beg, ending with RS facing for next row.

### Shape cap

Cast off 10 sts at beg of next two rows. 104 (122, 138) sts.

Dec 1 st each end every row 5 times, then every other row 6 times, then every 4 rows once, then every other row 7 times, then every row 8 times.

Cast off 7 sts at beg of next 2 rows.

Cast off rem 36 (54, 70) sts.

### Finishing

Join shoulder seams.

### Collar

With RS facing and using smaller needles, pick up and k 41 sts up right neck slope, 56 (68, 80) sts across back neck, and 41 sts down left neck slope. 138 (150, 162) sts.

Row 1 (WS of body, RS of collar): K2, \*p2, k2; rep from \* to end.

Row 2: P2, \*k2, p2; rep from \* to end.

Continue in rib as set until collar measures 3.5in, 9cm.

Cast off in pattern.

### Collar bands (both alike)

With RS of collar (WS of body) facing and using smaller needles, pick up and k 28 sts along row-end edge of collar between beg of neck shaping and cast off edge of collar.

Row 1 (WS): k3, \*p2, k2; rep from \* to last st, k1.

Row 2 (RS): k1, p2, \*k2, p2; rep from \* to last st, k1.

Continue in rib as set for a further 10 rows.

Cast off in pattern.

### Right placket band

With RS of body facing and using smaller needles, pick up and k 44 (52, 56) sts up right front opening edge from base of neck opening to collar pick-up row.

Work in rib as for collar bands for 12 rows.

Cast off in pattern.

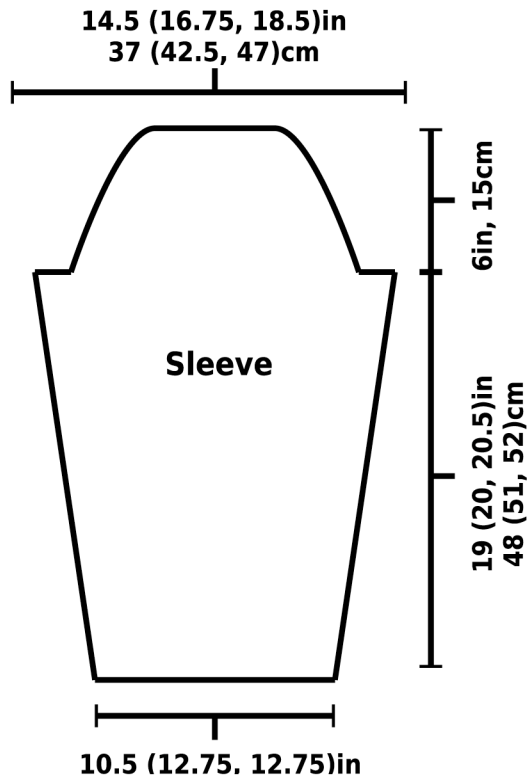
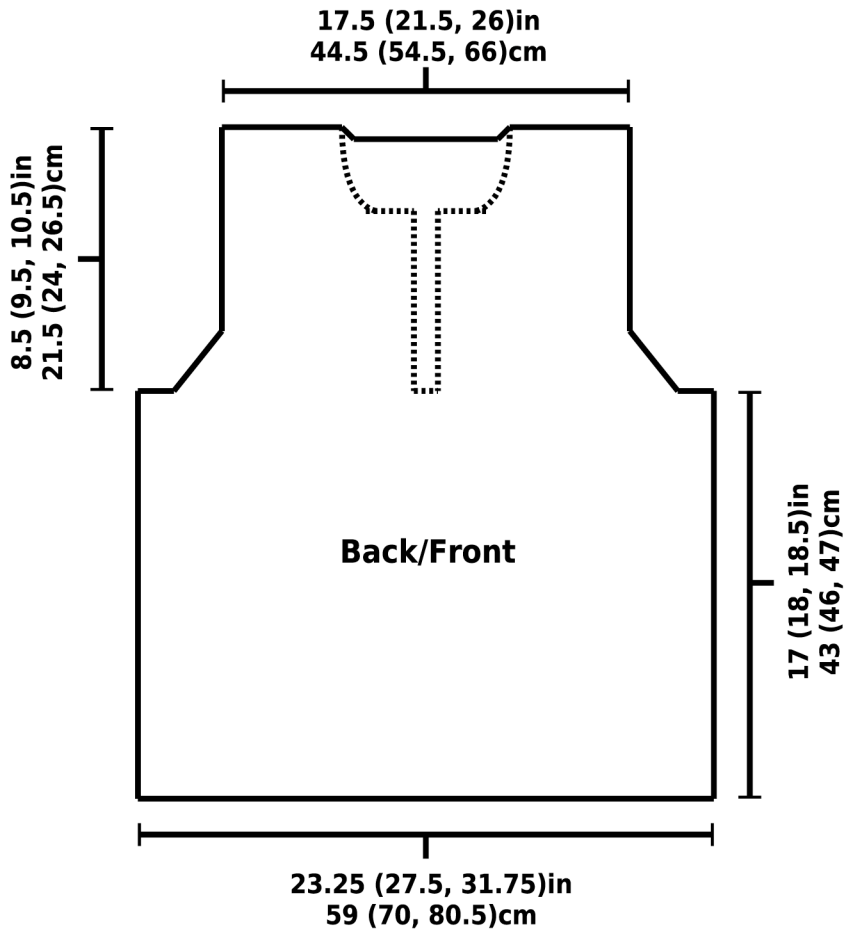
### Left placket band

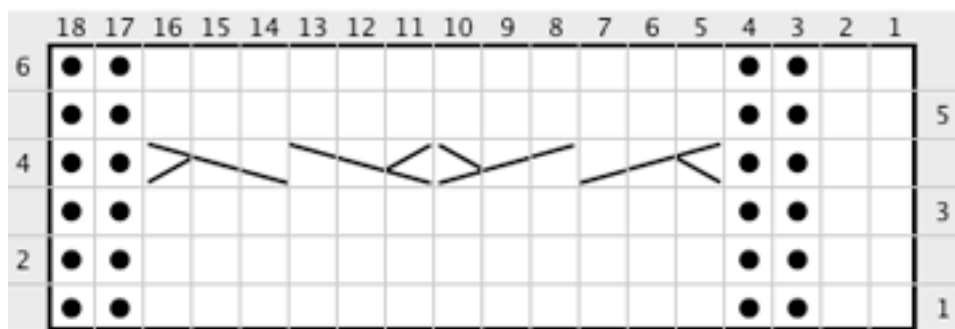
Work same as right band, on left front opening edge.

Join ends of collar bands to ends of front bands at neck edge, having seam facing RS of body (WS of collar). Sew row-end edge of right band to cast-off sts at base of neck opening, then sew row-end edge of left band in place behind right band.

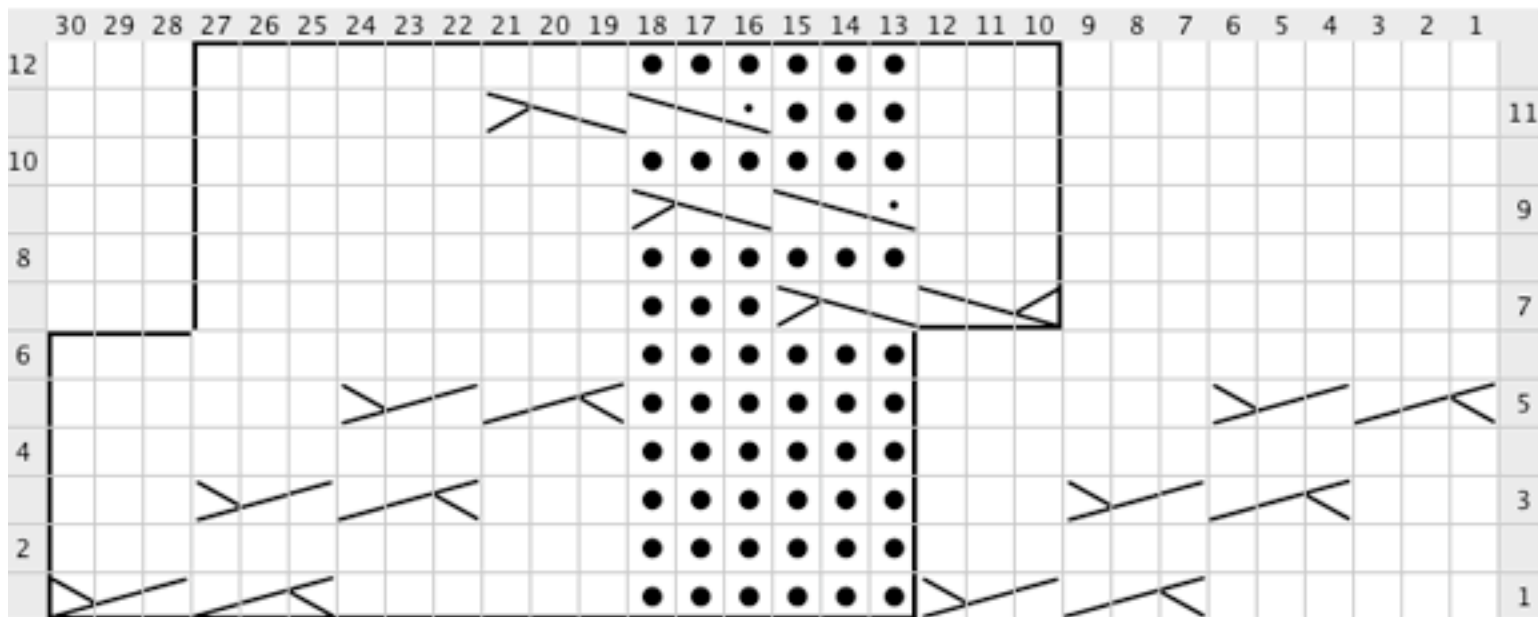
Set in sleeves. Join underarm and side seams. Weave in ends. Block.

Schematics and revised charts follow on the next pages.





Trellis revised sleeve chart at left;  
revised body chart and legend below



**Legend:**



**knit**  
RS: knit stitch  
WS: purl stitch



**c3 over 3 right**  
RS: s13 to CN, hold in back. k3, then k3 from CN



**purl**  
RS: purl stitch  
WS: knit stitch



**c3 over 3 left**  
RS: s13 to CN, hold in front. k3, k3 from CN



**c3 over 3 left P**  
RS: s13 to CN, hold in front. p3, k3 from CN



**c3 over 3 right**  
RS: s13 to CN, hold in back. k3, then k3 from CN